

DM VBF



Oil Pattern Distance:	41 Feet	Reverse Brush Drop:	41 Feet	Oil Per Board:	50 uL
Forward Oil Total:	13 mL	Reverse Oil Total:	14.75 mL	Volume Oil Total:	27.75 mL
Forward Boards Crossed:	260 Boards	Reverse Boards Crossed:	295 Boards	Total Boards Crossed:	555 Boards

	Start	Stop	Loads	Speed	Crossed	Start	End	Feet	T.Oil
1	2L	2R	1	10	37	0.0	0.0	0.0	1850
2	6L	6R	1	14	29	0.0	1.9	1.9	1450
3	8L	8R	2	14	50	1.9	5.8	3.9	2500
4	10L	10R	2	14	42	5.8	9.7	3.9	2100
5	11L	11R	2	18	38	9.7	14.8	5.1	1900
6	12L	12R	2	18	34	14.8	19.9	5.1	1700
7	13L	13R	2	18	30	19.9	25.0	5.1	1500
8	2L	2R	0	30	0	25.0	41.0	16.0	0

Forward Reverse More

	Start	Stop	Loads	Speed	Crossed	Start	End	Feet	T.Oil
1	2L	2R	0	30	0	41.0	35.0	-6.0	0
2	13L	13R	2	18	30	35.0	29.9	-5.1	1500
3	12L	12R	3	14	51	29.9	24.0	-5.9	2550
4	11L	11R	3	14	57	24.0	18.1	-5.9	2850
5	10L	10R	3	14	63	18.1	12.2	-5.9	3150
6	9L	9R	3	10	69	12.2	8.0	-4.2	3450
7	8L	8R	1	10	25	8.0	6.6	-1.4	1250
8	2L	2R	0	10	0	6.6	0.0	-6.6	0

Forward Reverse More

Conditioner:
Type In or Select
One

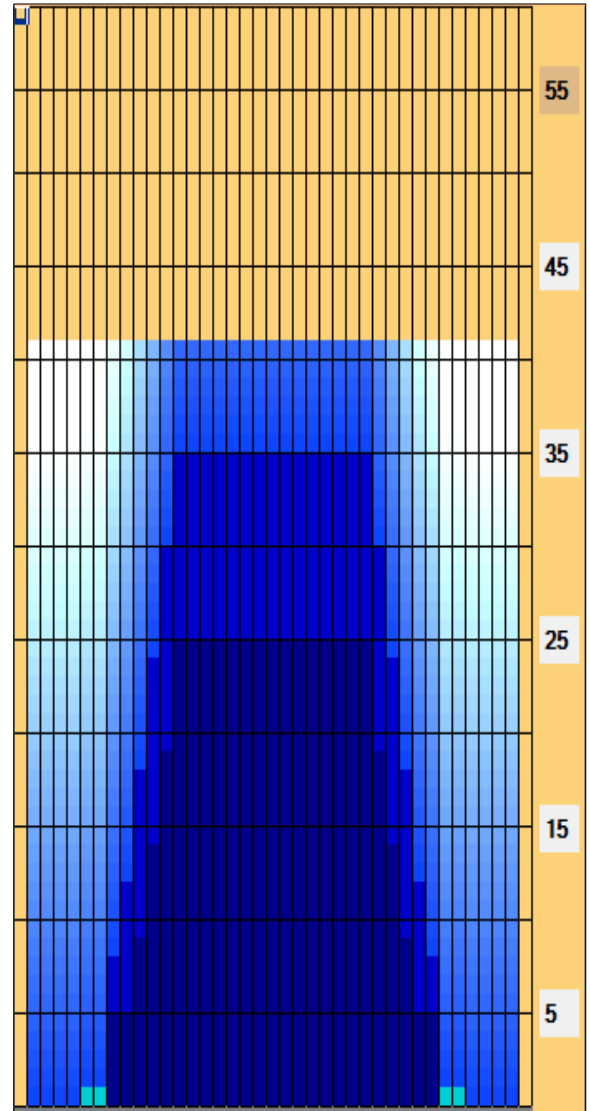
TransferType:
Type In or Select
One

Forward

Reverse

Combined

Buff



TRANSFER BRUSH SYSTEM Program #3

Item	3L-7L:18L-18R	8L-12L:18L-18R	13L-17L:18L-18R	18L-18R:17R-13R	18L-18R:12R-8R	18L-18R:7R-3R
Description	Outside Track:Middle	Middle Track:Middle	Inside Track:Middle	Middle: Inside Track	Middle:Middle Track	Middle:Outside Track
Track Zone Ratio	19.29	2.01	1	1	2.01	19.29

