

# Allsvenskan 40 2018



<b>Oil Pattern Distance:</b>	<b>40 Feet</b>	<b>Reverse Brush Drop:</b>	<b>40 Feet</b>	<b>Oil Per Board:</b>	<b>50 uL</b>
<b>Forward Oil Total:</b>	<b>13.25 mL</b>	<b>Reverse Oil Total:</b>	<b>10.85 mL</b>	<b>Volume Oil Total:</b>	<b>24.1 mL</b>
<b>Forward Boards Crossed:</b>	<b>265 Boards</b>	<b>Reverse Boards Crossed:</b>	<b>217 Boards</b>	<b>Total Boards Crossed:</b>	<b>482 Boards</b>

	Start	Stop	Loads	Speed	Crossed	Start	End	Feet	T.Oil
1	2L	2R	3	14	111	0.0	3.9	3.9	5550
2	9L	9R	1	18	23	3.9	6.4	2.5	1150
3	10L	10R	2	18	42	6.4	11.5	5.1	2100
4	11L	11R	2	22	38	11.5	17.7	6.2	1900
5	12L	12R	3	22	51	17.7	27.0	9.3	2550
6	2L	2R	0	26	0	27.0	35.0	8.0	0
7	2L	2R	0	30	0	35.0	40.0	5.0	0

Conditioner:  
Type In or Select One

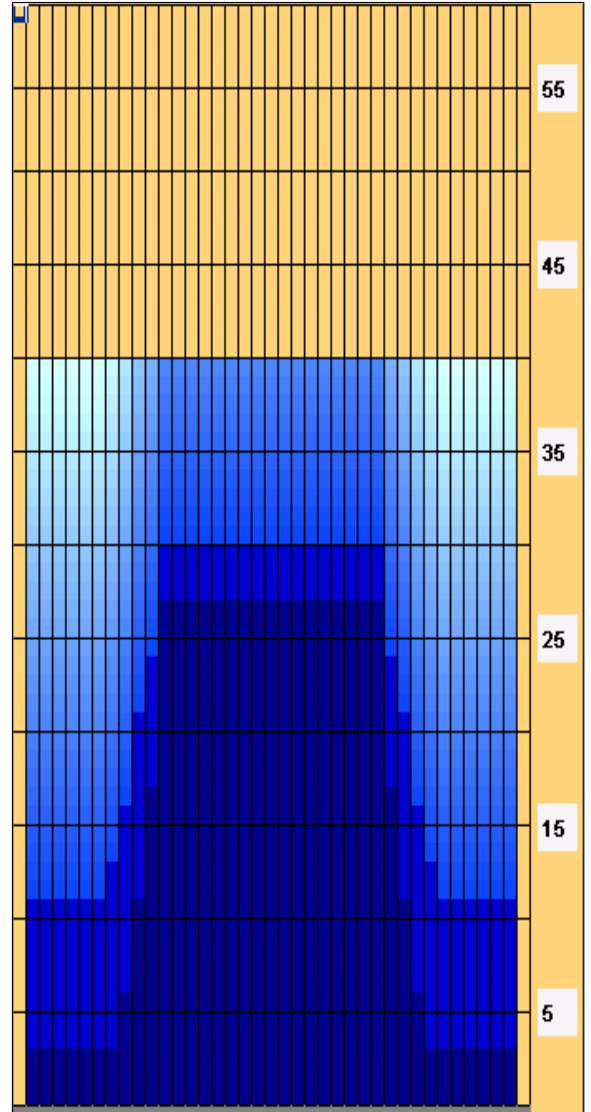
TransferType:  
Type In or Select One

Navigation: Forward Reverse More

	Start	Stop	Loads	Speed	Crossed	Start	End	Feet	T.Oil
1	2L	2R	0	30	0	40.0	30.0	-10.0	0
2	12L	12R	2	22	34	30.0	23.8	-6.2	1700
3	11L	11R	1	22	19	23.8	20.7	-3.1	950
4	10L	10R	2	18	42	20.7	15.6	-5.1	2100
5	9L	9R	1	18	23	15.6	13.1	-2.5	1150
6	8L	8R	1	14	25	13.1	11.2	-1.9	1250
7	2L	2R	2	14	74	11.2	7.3	-3.9	3700
8	2L	2R	0	14	0	7.3	0.0	-7.3	0

Navigation: Forward Reverse More

- Forward
- Reverse
- Combined
- Buff



Item	3L-7L:18L-18R	8L-12L:18L-18R	13L-17L:18L-18R	18L-18R:17R-13R	18L-18R:12R-8R	18L-18R:7R-3R
Description	Outside Track:Middle	Middle Track:Middle	Inside Track:Middle	Middle: Inside Track	Middle:Middle Track	Middle:Outside Track
Track Zone Ratio	4	1.64	1	1	1.64	4

