

SM Västerås 2017



Oil Pattern Distance:	40 Feet	Reverse Brush Drop:	32 Feet	Oil Per Board:	50 uL
Forward Oil Total:	16,1 mL	Reverse Oil Total:	8,3 mL	Volume Oil Total:	24,4 mL
Forward Boards Crossed:	322 Boards	Reverse Boards Crossed:	166 Boards	Total Boards Crossed:	488 Boards

	Start	Stop	Loads	Speed	Crossed	Start	End	Feet	T.Oil
1	2L	2R	4	14	148	0.0	5.9	5.9	7400
2	7L	7R	2	14	54	5.9	9.8	3.9	2700
3	9L	9R	2	18	46	9.8	14.9	5.1	2300
4	11L	10R	2	22	40	14.9	21.1	6.2	2000
5	13L	11R	2	22	34	21.1	27.3	6.2	1700
6	2L	2R	0	26	0	27.3	40.0	12.7	0

Navigation: Forward Reverse More

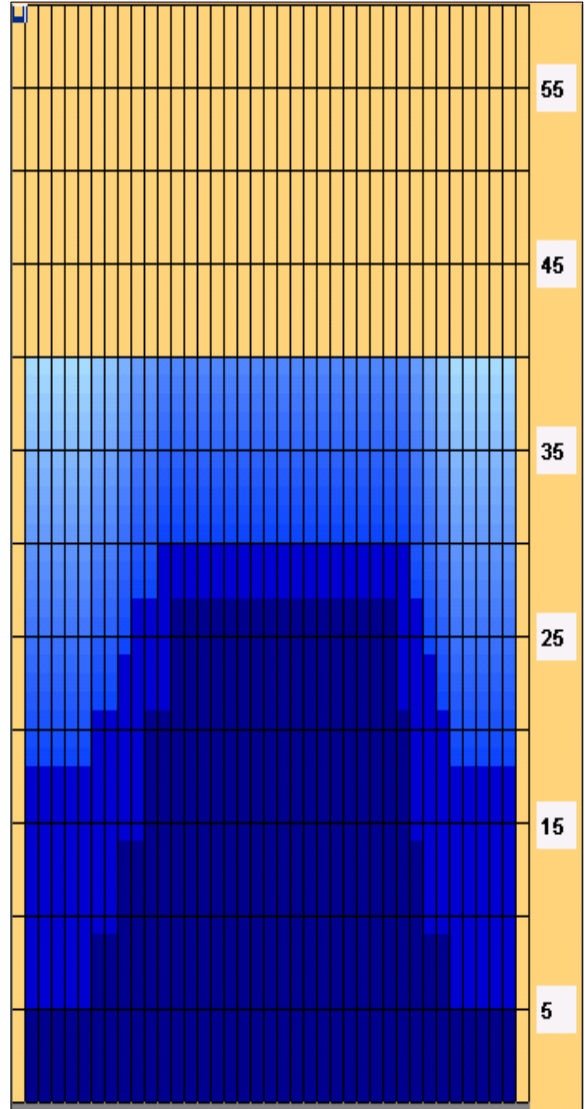
	Start	Stop	Loads	Speed	Crossed	Start	End	Feet	T.Oil
1	2L	2R	0	30	0	40.0	30.0	-10.0	0
2	12L	10R	1	22	19	30.0	26.9	-3.1	950
3	10L	9R	1	22	22	26.9	23.8	-3.1	1100
4	9L	8R	1	22	24	23.8	20.7	-3.1	1200
5	7L	7R	1	18	27	20.7	18.2	-2.5	1350
6	2L	2R	2	18	74	18.2	13.1	-5.1	3700
7	2L	2R	0	14	0	13.1	0.0	-13.1	0

Navigation: Forward Reverse More

Conditioner:
Type In or Select One

TransferType:
Type In or Select One

- Forward
- Reverse
- Combined
- Buff



Item	3L-7L:18L-18R	8L-12L:18L-18R	13L-17L:18L-18R	18L-18R:17R-13R	18L-18R:12R-8R	18L-18R:7R-3R
Description	Outside Track:Middle	Middle Track:Middle	Inside Track:Middle	Middle: Inside Track	Middle:Middle Track	Middle:Outside Track
Track Zone Ratio	2,73	1,38	1	1	1,2	2,73

