

Para SM Haga Bowling 2017



Oil Pattern Distance:	39 Feet	Reverse Brush Drop:	35 Feet	Oil Per Board:	50 uL
Forward Oil Total:	13.3 mL	Reverse Oil Total:	10.35 mL	Volume Oil Total:	23.65 mL
Forward Boards Crossed:	266 Boards	Reverse Boards Crossed:	207 Boards	Total Boards Crossed:	473 Boards

	Start	Stop	Loads	Speed	Crossed	Start	End	Feet	T.Oil
1	2L	2R	2	14	74	0.0	1.9	1.9	3700
2	7L	7R	2	18	54	1.9	7.0	5.1	2700
3	8L	8R	2	18	50	7.0	12.1	5.1	2500
4	9L	9R	2	18	46	12.1	17.2	5.1	2300
5	10L	10R	2	18	42	17.2	22.3	5.1	2100
6	2L	2R	0	22	0	22.3	30.0	7.7	0
7	2L	2R	0	26	0	30.0	34.0	4.0	0
8	2L	2R	0	30	0	34.0	39.0	5.0	0

Conditioner:
Type In or Select One

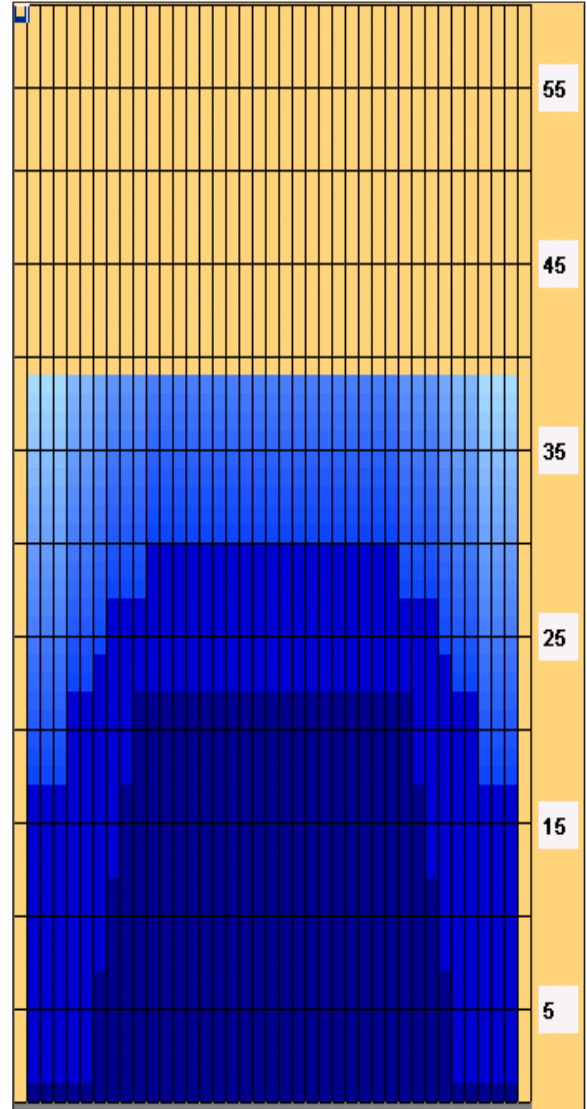
TransferType:
Type In or Select One

Forward
Reverse
Combined
Buff

Forward Reverse More

	Start	Stop	Loads	Speed	Crossed	Start	End	Feet	T.Oil
1	2L	2R	0	30	0	39.0	30.0	-9.0	0
2	11L	11R	1	22	19	30.0	26.9	-3.1	950
3	8L	8R	1	18	25	26.9	24.4	-2.5	1250
4	7L	7R	1	18	27	24.4	21.9	-2.5	1350
5	5L	5R	2	18	62	21.9	16.8	-5.1	3100
6	2L	2R	2	18	74	16.8	11.7	-5.1	3700
7	2L	2R	0	18	0	11.7	0.0	-11.7	0

Forward Reverse More



Item	3L-7L:18L-18R	8L-12L:18L-18R	13L-17L:18L-18R	18L-18R:17R-13R	18L-18R:12R-8R	18L-18R:7R-3R
Description	Outside Track:Middle	Middle Track:Middle	Inside Track:Middle	Middle: Inside Track	Middle:Middle Track	Middle:Outside Track
Track Zone Ratio	2.93	1.12	1	1	1.12	2.93

