

RÄVEN 40 UL SM Skövde



Oil Pattern Distance:	38 Feet	Reverse Brush Drop:	38 Feet	Oil Per Board:	40 uL
Forward Oil Total:	9.88 mL	Reverse Oil Total:	9.8 mL	Volume Oil Total:	19.68 mL
Forward Boards Crossed:	247 Boards	Reverse Boards Crossed:	245 Boards	Total Boards Crossed:	492 Boards

	Start	Stop	Loads	Speed	Crossed	Start	End	Feet	T.Oil
1	2L	2R	2	14	74	0.0	1.9	1.9	2960
2	6L	6R	1	18	29	1.9	4.4	2.5	1160
3	7L	7R	1	18	27	4.4	6.9	2.5	1080
4	8L	8R	2	18	50	6.9	12.0	5.1	2000
5	9L	9R	2	18	46	12.0	17.1	5.1	1840
6	10L	10R	1	18	21	17.1	19.6	2.5	840
7	2L	2R	0	18	0	19.6	30.0	10.4	0
8	2L	2R	0	26	0	30.0	34.0	4.0	0
9	2L	2R	0	30	0	34.0	38.0	4.0	0

Navigation: Forward Reverse More

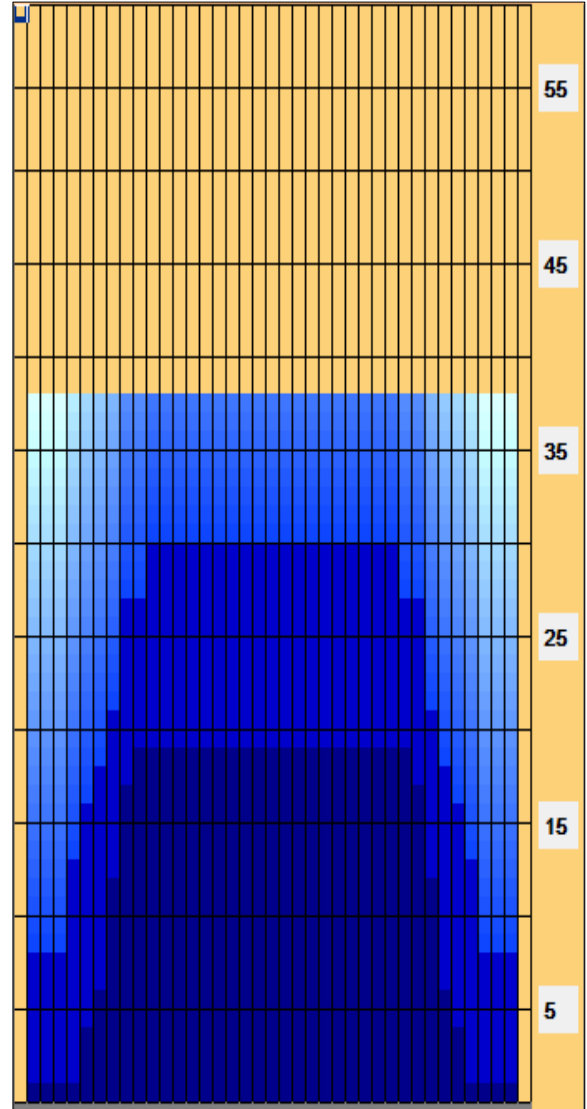
	Start	Stop	Loads	Speed	Crossed	Start	End	Feet	T.Oil
1	2L	2R	0	30	0	38.0	30.0	-8.0	0
2	11L	11R	1	22	19	30.0	26.9	-3.1	760
3	9L	9R	2	22	46	26.9	20.7	-6.2	1840
4	8L	8R	1	18	25	20.7	18.2	-2.5	1000
5	7L	7R	1	18	27	18.2	15.7	-2.5	1080
6	6L	6R	1	18	29	15.7	13.2	-2.5	1160
7	5L	5R	2	18	62	13.2	8.1	-5.1	2480
8	2L	2R	1	18	37	8.1	5.6	-2.5	1480
9	2L	2R	0	14	0	5.6	0.0	-5.6	0

Navigation: Forward Reverse More

Conditioner:
Type In or Select One

TransferType:
Type In or Select One

- Forward
- Reverse
- Combined
- Buff



Item	3L-7L:18L-18R	8L-12L:18L-18R	13L-17L:18L-18R	18L-18R:17R-13R	18L-18R:12R-8R	18L-18R:7R-3R
Description	Outside Track:Middle	Middle Track:Middle	Inside Track:Middle	Middle: Inside Track	Middle:Middle Track	Middle:Outside Track
Track Zone Ratio	3.33	1.11	1	1	1.11	3.33

