

SM Stockholm 2018



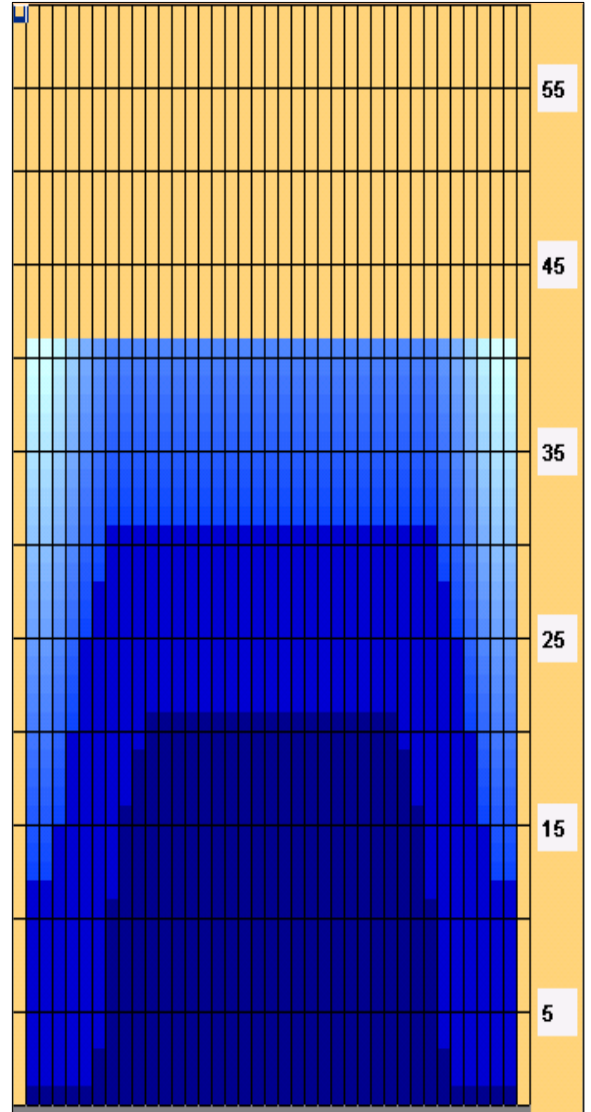
Oil Pattern Distance: 41 Feet **Reverse Brush Drop:** 34 Feet **Oil Per Board:** 50 uL
Forward Oil Total: 13.1 mL **Reverse Oil Total:** 12.1 mL **Volume Oil Total:** 25.2 mL
Forward Boards Crossed: 262 Boards **Reverse Boards Crossed:** 242 Boards **Total Boards Crossed:** 504 Boards

	Start	Stop	Loads	Speed	Crossed	Start	End	Feet	T.Oil
1	2L	2R	2	14	74	0.0	1.9	1.9	3700
2	7L	7R	1	14	27	1.9	3.8	1.9	1350
3	8L	8R	3	18	75	3.8	11.4	7.6	3750
4	9L	9R	2	18	46	11.4	16.5	5.1	2300
5	10L	10R	1	18	21	16.5	19.0	2.5	1050
6	11L	11R	1	18	19	19.0	21.5	2.5	950
7	2L	2R	0	26	0	21.5	41.0	19.5	0

Conditioner:
 Type In or Select One
 TransferType:
 Type In or Select One

	Start	Stop	Loads	Speed	Crossed	Start	End	Feet	T.Oil
1	2L	2R	0	30	0	41.0	31.0	-10.0	0
2	8L	8R	1	22	25	31.0	27.9	-3.1	1250
3	7L	7R	1	22	27	27.9	24.8	-3.1	1350
4	6L	6R	2	18	58	24.8	19.7	-5.1	2900
5	5L	5R	2	18	62	19.7	14.6	-5.1	3100
6	4L	4R	1	18	33	14.6	12.1	-2.5	1650
7	2L	2R	1	14	37	12.1	10.2	-1.9	1850
8	2L	2R	0	14	0	10.2	0.0	-10.2	0

Forward
 Reverse
 Combined
 Buff



Item	3L-7L:18L-18R	8L-12L:18L-18R	13L-17L:18L-18R	18L-18R:17R-13R	18L-18R:12R-8R	18L-18R:7R-3R
Description	Outside Track:Middle	Middle Track:Middle	Inside Track:Middle	Middle: Inside Track	Middle:Middle Track	Middle:Outside Track
Track Zone Ratio	2.9	1.08	1	1	1.08	2.9

