

Allsvenskan 39 2018



Oil Pattern Distance: 39 Feet **Reverse Brush Drop:** 39 Feet **Oil Per Board:** 50 uL
Forward Oil Total: 12.6 mL **Reverse Oil Total:** 10.75 mL **Volume Oil Total:** 23.35 mL
Forward Boards Crossed: 252 Boards **Reverse Boards Crossed:** 215 Boards **Total Boards Crossed:** 467 Boards

	Start	Stop	Loads	Speed	Crossed	Start	End	Feet	T.Oil
1	2L	2R	2	14	74	0.0	1.9	1.9	3700
2	6L	6R	2	14	58	1.9	5.8	3.9	2900
3	9L	9R	3	18	69	5.8	13.4	7.6	3450
4	12L	12R	3	18	51	13.4	21.0	7.6	2550
5	2L	2R	0	22	0	21.0	34.0	13.0	0
6	2L	2R	0	26	0	34.0	39.0	5.0	0

Conditioner:
 Type In or Select One

 TransferType:
 Type In or Select One

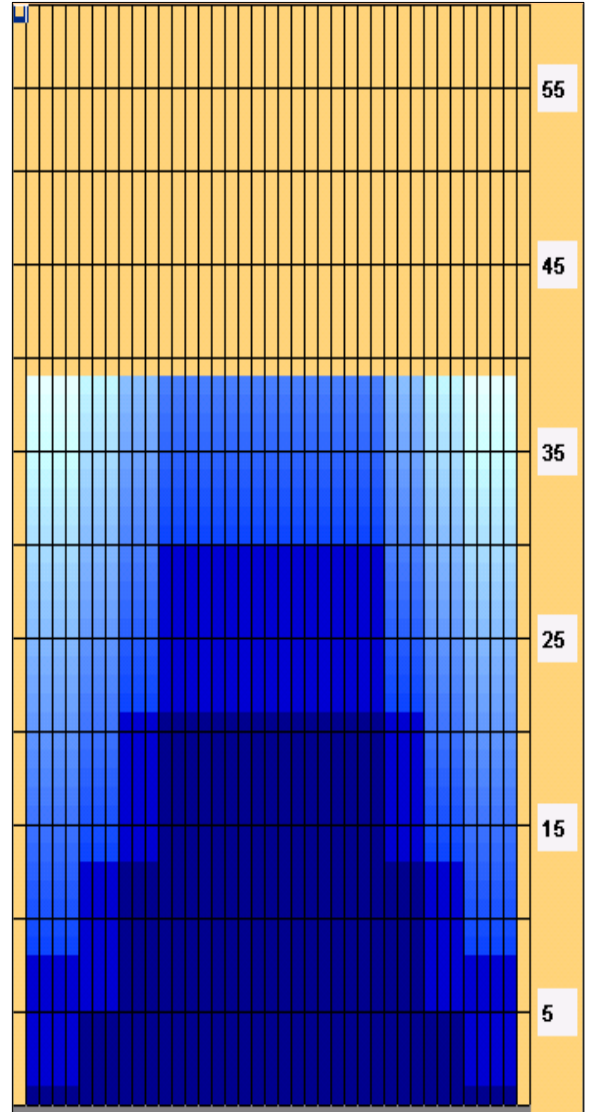
	Start	Stop	Loads	Speed	Crossed	Start	End	Feet	T.Oil
1	2L	2R	0	30	0	39.0	30.0	-9.0	0
2	12L	12R	3	22	51	30.0	20.7	-9.3	2550
3	9L	9R	3	18	69	20.7	13.1	-7.6	3450
4	6L	6R	2	18	58	13.1	8.0	-5.1	2900
5	2L	2R	1	18	37	8.0	5.5	-2.5	1850
6	2L	2R	0	18	0	5.5	0.0	-5.5	0

Forward

 Reverse

 Combined

 Buff



Item	3L-7L:18L-18R	8L-12L:18L-18R	13L-17L:18L-18R	18L-18R:17R-13R	18L-18R:12R-8R	18L-18R:7R-3R
Description	Outside Track:Middle	Middle Track:Middle	Inside Track:Middle	Middle: Inside Track	Middle:Middle Track	Middle:Outside Track
Track Zone Ratio	4.13	1.46	1	1	1.46	4.13

