

Allsvenskan 36 2018



Oil Pattern Distance: 36 Feet **Reverse Brush Drop:** 36 Feet **Oil Per Board:** 50 uL
Forward Oil Total: 13.15 mL **Reverse Oil Total:** 11.5 mL **Volume Oil Total:** 24.65 mL
Forward Boards Crossed: 263 Boards **Reverse Boards Crossed:** 230 Boards **Total Boards Crossed:** 493 Boards

| | Start | Stop | Loads | Speed | Crossed | Start | End | Feet | T.Oil |
|---|-------|------|-------|-------|---------|-------|------|------|-------|
| 1 | 2L | 2R | 2 | 18 | 74 | 0.0 | 2.5 | 2.5 | 3700 |
| 2 | 4L | 4R | 1 | 18 | 33 | 2.5 | 5.0 | 2.5 | 1650 |
| 3 | 5L | 5R | 1 | 18 | 31 | 5.0 | 7.5 | 2.5 | 1550 |
| 4 | 6L | 6R | 1 | 22 | 29 | 7.5 | 10.6 | 3.1 | 1450 |
| 5 | 7L | 7R | 1 | 22 | 27 | 10.6 | 13.7 | 3.1 | 1350 |
| 6 | 8L | 8R | 1 | 26 | 25 | 13.7 | 17.3 | 3.6 | 1250 |
| 7 | 9L | 9R | 1 | 26 | 23 | 17.3 | 20.9 | 3.6 | 1150 |
| 8 | 10L | 10R | 1 | 26 | 21 | 20.9 | 24.5 | 3.6 | 1050 |
| 9 | 2L | 2R | 0 | 22 | 0 | 24.5 | 36.0 | 11.5 | 0 |

Navigation: Forward Reverse More

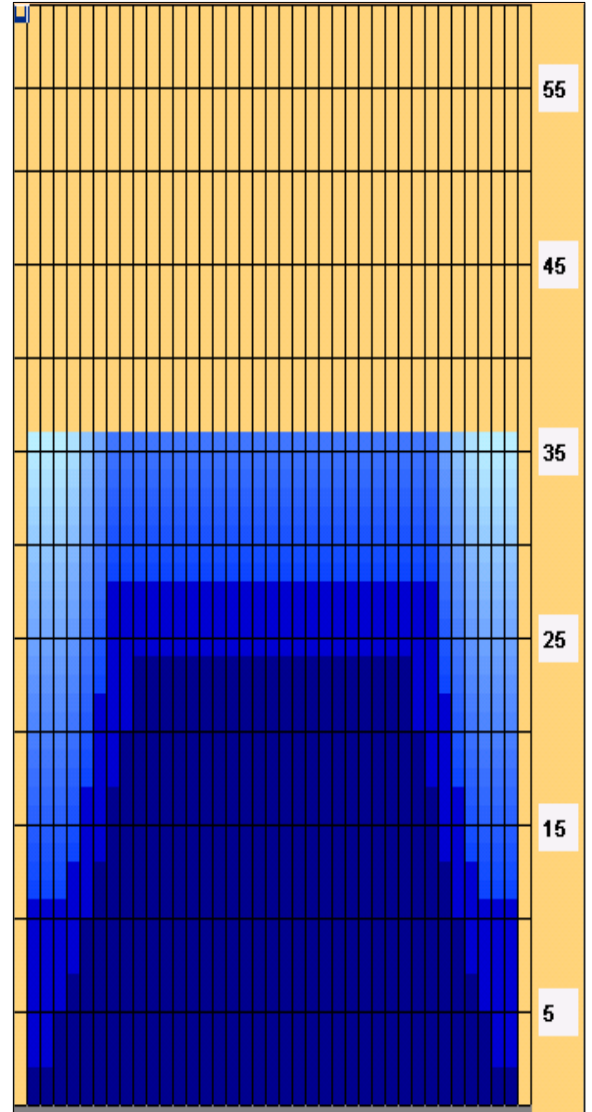
| | Start | Stop | Loads | Speed | Crossed | Start | End | Feet | T.Oil |
|---|-------|------|-------|-------|---------|-------|------|------|-------|
| 1 | 2L | 2R | 0 | 26 | 0 | 36.0 | 28.0 | -8.0 | 0 |
| 2 | 8L | 8R | 2 | 22 | 50 | 28.0 | 21.8 | -6.2 | 2500 |
| 3 | 7L | 7R | 2 | 18 | 54 | 21.8 | 16.7 | -5.1 | 2700 |
| 4 | 6L | 6R | 2 | 14 | 58 | 16.7 | 12.8 | -3.9 | 2900 |
| 5 | 5L | 5R | 1 | 14 | 31 | 12.8 | 10.9 | -1.9 | 1550 |
| 6 | 2L | 2R | 1 | 14 | 37 | 10.9 | 9.0 | -1.9 | 1850 |
| 7 | 2L | 2R | 0 | 14 | 0 | 9.0 | 0.0 | -9.0 | 0 |

Navigation: Forward Reverse More

Conditioner:
 Type In or Select One

 TransferType:
 Type In or Select One

- Forward
- Reverse
- Combined
- Buff



| Item | 3L-7L:18L-18R | 8L-12L:18L-18R | 13L-17L:18L-18R | 18L-18R:17R-13R | 18L-18R:12R-8R | 18L-18R:7R-3R |
|------------------|----------------------|---------------------|---------------------|----------------------|---------------------|----------------------|
| Description | Outside Track:Middle | Middle Track:Middle | Inside Track:Middle | Middle: Inside Track | Middle:Middle Track | Middle:Outside Track |
| Track Zone Ratio | 2.5 | 1.04 | 1 | 1 | 1.04 | 2.5 |

