

Action Jubal 2018 Haga



Oil Pattern Distance:	41 Feet	Reverse Brush Drop:	36 Feet	Oil Per Board:	50 uL
Forward Oil Total:	12.75 mL	Reverse Oil Total:	7.2 mL	Volume Oil Total:	19.95 mL
Forward Boards Crossed:	255 Boards	Reverse Boards Crossed:	144 Boards	Total Boards Crossed:	399 Boards

	Start	Stop	Loads	Speed	Crossed	Start	End	Feet	T.Oil
1	2L	2R	3	18	111	0.0	5.1	5.1	5550
2	10L	10R	2	18	42	5.1	10.2	5.1	2100
3	11L	11R	2	18	38	10.2	15.3	5.1	1900
4	12L	12R	2	18	34	15.3	20.4	5.1	1700
5	13L	13R	2	22	30	20.4	26.6	6.2	1500
6	2L	2R	0	22	0	26.6	36.0	9.4	0
7	2L	2R	0	26	0	36.0	41.0	5.0	0

Navigation: Forward Reverse More

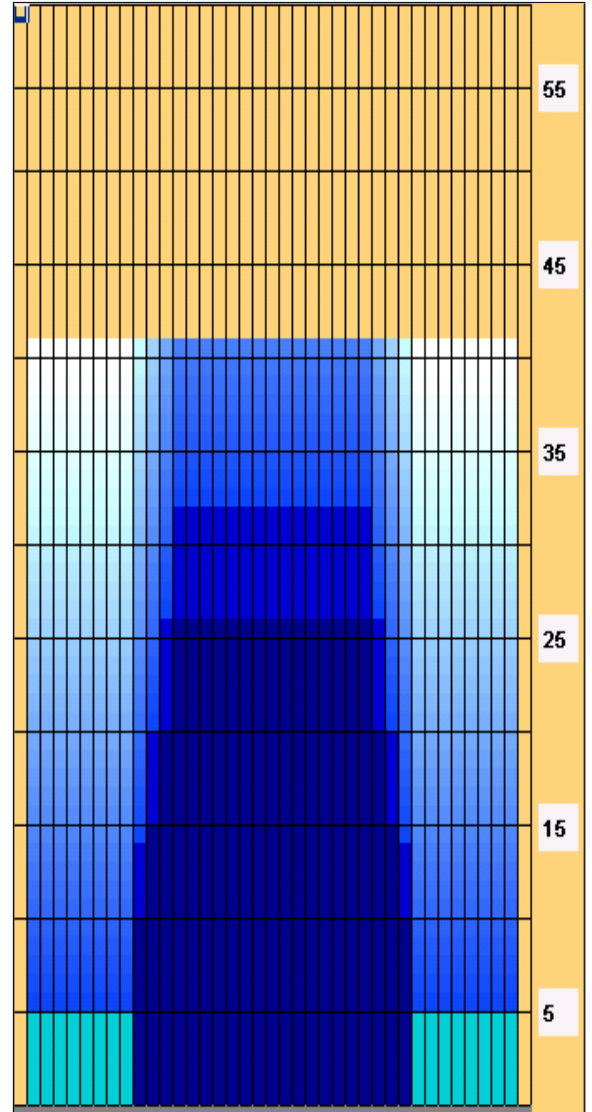
	Start	Stop	Loads	Speed	Crossed	Start	End	Feet	T.Oil
1	2L	2R	0	30	0	41.0	32.0	-9.0	0
2	13L	13R	2	22	30	32.0	25.8	-6.2	1500
3	12L	12R	2	22	34	25.8	19.6	-6.2	1700
4	11L	11R	2	18	38	19.6	14.5	-5.1	1900
5	10L	10R	2	18	42	14.5	9.4	-5.1	2100
6	2L	2R	0	14	0	9.4	0.0	-9.4	0

Navigation: Forward Reverse More

Conditioner:
Type In or Select One

TransferType:
Type In or Select One

- Forward
- Reverse
- Combined
- Buff



Item	3L-7L:18L-18R	8L-12L:18L-18R	13L-17L:18L-18R	18L-18R:17R-13R	18L-18R:12R-8R	18L-18R:7R-3R
Description	Outside Track:Middle	Middle Track:Middle	Inside Track:Middle	Middle: Inside Track	Middle:Middle Track	Middle:Outside Track
Track Zone Ratio	6.33	2.44	1	1	2.44	6.33

